

Des-Continuum

· 2001 ·

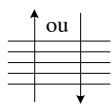
Arthur Rinaldi

para violão solo
for solo guitar

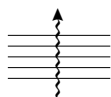
presto

Des-Continuum

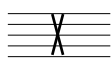
indicações para execução · *performance indications*



arpejo em direção ao agudo ou grave, respectivamente
arpeggio from lower to higher strings or vice-versa, respectively



rasgueado (extremamente ruidoso)
rasgueado (extremely noisy)



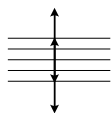
atacar com a mão direita enquanto as cordas são abafadas com a mão esquerda
strike with the right hand as the strings are muffled with the left hand



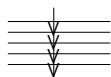
tocar um acorde qualquer, utilizando a posição no pentagrama como referência aproximada de altura/registro
play any chord, using the position in relation to the pentagram as an approximate reference of pitch/register



tapping (as notas são produzidas pela pressão súbita dos dedos da mão esquerda, sem o ataque da mão direita)
tapping (the notes are produced by a sudden pressure by the fingers of the left hand, without any strike by the right hand)



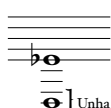
rasgueado para cima e para baixo, alternado muito rapidamente
up and down rasgueado, alternated very rapidly



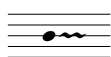
arpejo obtido através de quatro arpejos seguidos (dedos mínimo, anular, médio e indicador) em direção ao grave
arpeggio obtained by four continued arpeggios (played respectively by the little finger, ring finger, middle finger and index finger) from higher to lower strings



percutir o cavalete, junto ao rastilho, com o polegar
strike the fretboard, near the saddle, with the thumb



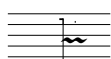
deixar a corda mais grave resvalando na unha do dedo que prende a corda adjacente
allow the lower string to graze at the fingernail of the finger which is holding the next string



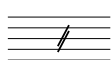
seqüência de notas repetidas
a sequence of repeated notes



pizzicato Bártok



todas as notas delimitadas pelo colchete devem ser repetidas
all notes delimited by the bracket must be continuously repeated



separação de registro (a indicação de notas oitavadas, no corpo da partitura, refere-se apenas às notas que se encontram acima deste grafismo)
a division of register (the indication of octave higher at the score is meant only for the notes which are above this symbol)

Des-Continuum

· 2001 ·

Arthur Rinaldi

Violão · 6ª corda em ré
Guitar · 6th string in D

$\text{♩} = 80$

mf *mp* *mf* *mf*

f *mp* *mf* *mp* *dim.* *poco rall.*

lasciare vibrare (l.v.)

X A mão esquerda não deve pressionar totalmente a corda.
The left hand must press the string only partially.

a tempo *p* *mf* *p* *mf* *p*

mf *mp* *mf* *ff* *f* *p*

cresc. *mf* *cresc.* *fff* *ff* *f* *rall.* *mp* *pp* *ppp* *mp* *dim.*

f *mf* *ff*

Nos trechos não métricos deve-se usar o espaço entre as notas como referência de suas durações.
During the non-metric sections, the performer must use the space between notes as a reference of their durations.

Musical staff with notes, slurs, and dynamic markings. It includes a triplet of eighth notes, a quarter note, and a half note. Dynamic markings include *pp* and *dim.*. A first ending bracket labeled "1.v." spans the final two notes.

Musical staff starting with a *Glissando* marking and a dynamic of *f*. It features several triplets of eighth notes and a dynamic of *mp*. The piece then moves to *ff* and *mf* dynamics, ending with a first ending bracket labeled "1.v." and a *dim.* marking.

Musical staff with chords and dynamic markings. Dynamics range from *mf* to *ff*. A section is marked "contínuo continuously". The piece concludes with a *ff dim.* marking.

$\text{♩} = 125$

Musical staff with eighth notes and triplets. It includes a tempo marking $\text{♩} = \text{♩}$.

Musical staff with eighth notes and triplets. It includes a *rall.* marking and a tempo marking $\text{♩} = \text{♩}$ with the instruction "a tempo".

Musical staff with chords and triplets. It features a *fff* dynamic marking.

Musical staff with chords and glissandos.

rall. e dim. *a tempo*

ff *p* *Glissando*

Detailed description: This staff begins with a treble clef and a key signature of one flat. It features a series of notes with downward-pointing arrows and 'X' marks, indicating a glissando. A wavy line indicates a gradual rise and fall in pitch. The tempo changes from 'rall. e dim.' to 'a tempo'. Dynamic markings include 'ff' and 'p'. A 'Glissando' label is placed at the end of the staff.

Gliss.

Detailed description: This staff continues the musical piece with various glissando techniques. It includes notes with downward-pointing arrows and 'X' marks, as well as wavy lines. A 'Gliss.' label is at the end.

Glissando

Detailed description: This staff features a treble clef and a key signature of one flat. It includes notes with downward-pointing arrows and 'X' marks, and wavy lines. A 'Glissando' label is present.

Gliss. Gliss.

Detailed description: This staff continues the musical piece with various glissando techniques. It includes notes with downward-pointing arrows and 'X' marks, and wavy lines. A 'Gliss. Gliss.' label is present.

Glissando *Glissando*

Detailed description: This staff features a treble clef and a key signature of one flat. It includes notes with downward-pointing arrows and 'X' marks, and wavy lines. Two 'Glissando' labels are present.

Glissando *Glissando* *Gliss.* *Glissando* *Glissando*

poco rall. *dim.* *pp*

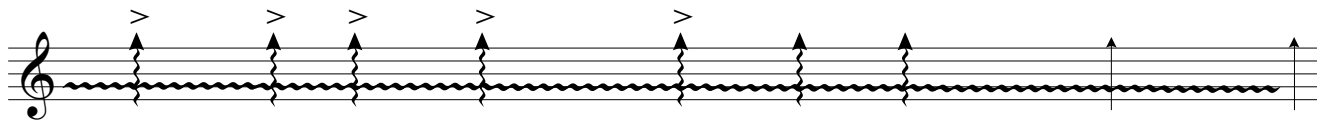
rasgueado com a parte convexa das unhas
rasgueado made with the convex side of the fingernails

Detailed description: This staff features a treble clef and a key signature of one flat. It includes notes with downward-pointing arrows and 'X' marks, and wavy lines. Multiple 'Glissando' labels are present. The tempo changes to 'poco rall.' and the dynamics to 'dim.' and 'pp'. A note with a sharp sign is shown. A text box explains a technique: 'rasgueado com a parte convexa das unhas' and 'rasgueado made with the convex side of the fingernails'.

ff

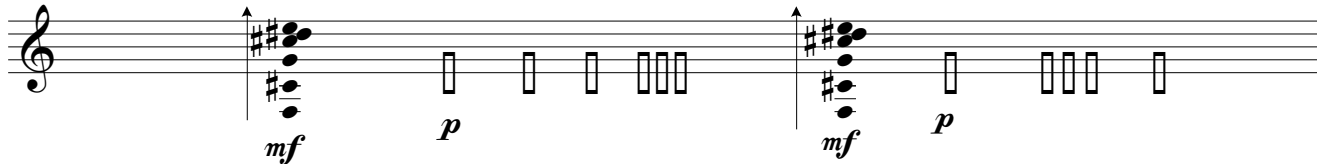
Detailed description: This staff features a treble clef and a key signature of one flat. It includes notes with downward-pointing arrows and 'X' marks, and wavy lines. A 'ff' dynamic marking is present.

rall. e dim.



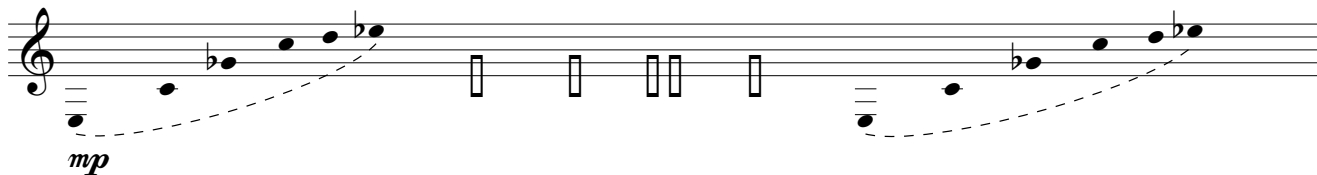
a tempo

più lento



l.v.

l.v.



l.v.

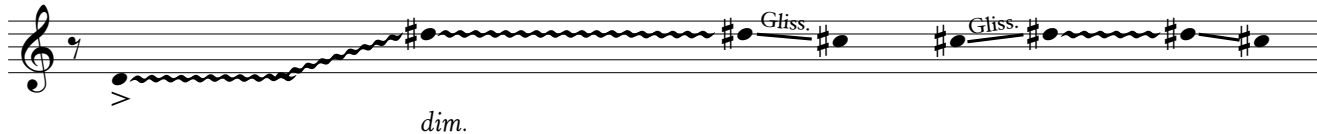


♩ = 60



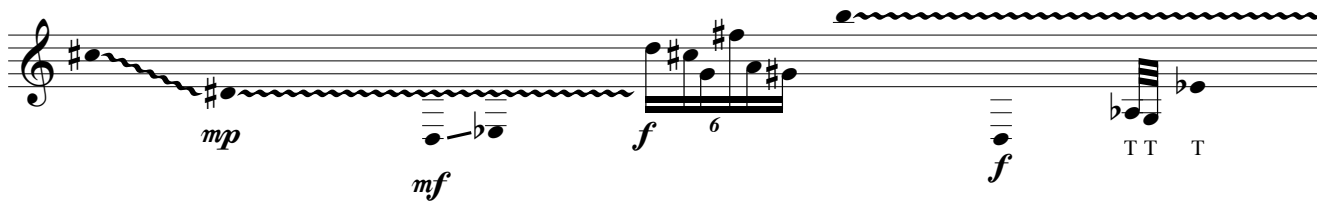
rit. molto

a tempo



♩ = 70

ff *mf*



mp
Unha
ff

mp
Unha
ff

f 3 *cresc.*

ff

3 6 7

ff

f 3 *ff*

ff 3

mf *f*

ff 3

mf

8^{va}
Glissando

♩ = 60

mf *cresc.*

8^{va}
Glissando

ff

dim.

p

accel. e cresc. poco a poco

repetir apenas nota Sol
repeat only the G note

8^{va}

fff

f

mf

mp

8^{va}

p

enfatar a nota Fá
emphasize the F note

mesmo arpejo
(mudar a posição da mão esquerda durante o movimento do arpejo)
same arpeggio
(change the position of the left hand during the movement of the four arpeggios)

8^{va}

mesmo arpejo
same arpeggio